

# D VOICE

THE OFFICIAL PASSOVER NEWSLETTER OF DALLAS KOSHER

## PASSOVER

APRIL 2024 / NISSAN 5784

pg. 2

HALACHIC  
TIMES

pg. 3

KASHERING  
YOUR KITCHEN

pg. 8

LOCAL SERVICES  
CERTIFIED  
FOR PASSOVER

# HALACHIC TIMES

## LEADING UP TO PASSOVER

### *LATEST TIME FOR DK*

#### *TO SELL YOUR CHAMETZ*

Thursday, April 18th - 5:00pm

#### *SEARCH FOR CHAMETZ "BEDIKAT"*

Sunday, April 21st - after 8:44pm

#### *FAST OF THE FIRST BORN*

Monday, April 22nd fast begins at 5:30am

#### *LATEST TIME FOR EATING CHAMETZ*

Monday, April 22nd - 10:47am

#### *LATEST TIME TO BURN CHAMETZ*

Monday, April 22nd - 12:06pm

#### *MIDDAY/CHATZOT 1:25 PM*

## CANDLE LIGHTING

### *FIRST SEDER*

Monday, April 22th - 7:44pm

### *MIDNIGHT 1:25 AM*

### *SECOND SEDER*

Tuesday, April 23rd after 8:45 pm

\*Light from pre-existing flame.

### *FRIDAY NIGHT*

### *SHABBOS CHOL HAMOED*

Friday, April 26th - 7:47pm

### *SEVENTH DAY OF PESACH*

Sunday, April 28th - 7:49pm

### *EIGHTH DAY OF PESACH*

Monday, April 29th after 8:49pm

\*Light from pre-existing flame.

\*Pesach ends 8:52 pm

Wednesday April 30th.

\*Wait until 10:00 pm before eating chametz that was sold.

Times / Zmanim above are fixed for zip code 75230. Please check with your local synagogue or online resources specific to your location for accurate information.



**DK**

## PASSOVER OFFERINGS

**SIX HIGH-END WINES**

It's that time of year again when the Vaad offers wine samplers, perfect for your Passover seder or for any time of the year. Just like last year, we've curated a selection of six varieties of high-end superior wines: three new wines and three repeat varieties due to their popularity.

SCAN BELOW TO ORDER TODAY OR VISIT:  
[DALLASKOSHER.ORG/WINE-SALE](http://DALLASKOSHER.ORG/WINE-SALE)



  
**DALLAS KOSHER**  
[DALLASKOSHER.ORG](http://DALLASKOSHER.ORG)

# KASHERING YOUR KITCHEN

(part 1)

## *SIMPLE PREPRATATION*

**A thorough housecleaning is undertaken in preparation for the Passover festival. All Chametz should be removed from one's domain (i.e., home, office, car, etc.). The formal search for Chametz is undertaken on Sunday, April 21st. (This year the search is on Sunday, April 21st after 8:44pm).**

## *REFRIGERATORS / PANTRIES*

**Surfaces upon which only cold Chametz has been placed during the year, such as refrigerators and pantry shelves, should be thoroughly washed and rinsed to ready them for Passover use.**

Before kashering any appliances, pots, utensils or silverware, all rust and food residue must be removed and the items thoroughly cleaned. The objects must remain unused for 24 hours prior to the kashering process.

## *COUNTER TOP SURFACES*

Surfaces that may not be kashered for Passover and left uncovered, include: Avonite\*, Cambria\*, Corian\*, Granite\*, Metals\*, Quartz\*, Quartzite\*, Silestone\*, Vendura\*.

*\*Many opinions permit these to be kashered and left uncovered.*

**These surfaces must be cleaned, not used for 24 hours, and then thoroughly covered with boiling water from a kosher for Passover pot.**



### LOG ONTO YOUTUBE:

Rabbi Sholey Klein gives instructions on how to kasher your kitchen.



FOR QUESTIONS : *Call the DK Rabbis or your Rabbi about kashering or preparing your kitchen.*

# KASHERING YOUR KITCHEN

(part 2)

## *MICROWAVE OVENS*

Microwave ovens without browning elements are kashered (according to many opinions) by cleaning thoroughly and after not using for 24 hours by inserting a clean, sturdy glass cup filled with 10-12 ounces of water and then turning on the microwave to the highest power level bringing the water to a boil. Run for 15 minutes as steam fills the inside of the microwave. The glass plate that remains inside the microwave oven should be covered with cardboard, contact paper or the like.

**The microwave oven may not be used on Yom Tov or Shabbat, but may be used during the intermediate days of the holiday: April 25, 26 & 28.**

## *FLATWARE AND METAL UTENSILS*

Use a kashered pot to kasher other utensils by immersing the thoroughly cleaned items in boiling water for 20 seconds. Remember that the items should not be used for at least 24 hours between cleaning and immersion. Items should be rinsed in cold water after this kashering process. If you desire to use that pot for Passover, the pot should be re-kashered.

## *POTS AND PANS*

A pot must be cleaned, then not used for 24 hours, and filled to its rim with water. Bring water to a rapid boil, with the water boiling over the sides of the pot. You may have to help it along by inserting a plastic spoon and "pushing" the water over the rim. Another method, when possible, is to immerse the pot into a larger kashered pot of boiling water until it is completely covered by water.

## *SINKS*

Porcelain and Enamel sinks cannot be kashered. Clean well and place a new insert such as a plastic tub or contact paper inside the sink. Stainless steel sinks may be kashered by carefully pouring boiling water over all surfaces of the sink and faucet. Do not use the sink for 24 hours prior to kashering. The strainer, stopper or basket needs to be new.

## *OVENS AND STOVES*

Self-cleaning ovens are kashered when the oven goes through a self-cleaning cycle. However, other ovens and their racks must be thoroughly cleaned with a caustic cleaner like Easy Off, and turned to the highest temperature setting for an hour with racks inside. Extra care should be given to the hinges, handles, and corners as they tend to accumulate grease and chametz. Electric burners are kashered after sitting for 24 hours, then heated to a red glow. Gas grates should be thoroughly cleaned and placed in the oven for 45 minutes at the highest temperature. Stove top surfaces should be scrubbed clean and covered with a double layer of heavy-duty foil.

**Glass, Corning, Halogen or Ceran range tops are difficult to kasher. For instructions on kashering these or other appliance questions, call us at 214-739-6535.**

# KASHERING YOUR KITCHEN

(part 3)

## MILK

Cholov Yisroel milk is available at Tom Thumb Preston/Forest, Tom Thumb Coit & Campbell, and K Market. It requires KFP and can be found in the KFP section of each market. If KFP milk isn't available for purchase, you may buy regular unflavored milk before Passover begins.

## MISCELLANEOUS

Cloth linens, which are used year round, may be used for Passover if laundered thoroughly with hot water and soap without starch. Purchase new sponges and dish washing utensils. Food processors and blenders that have totally sealed units in their motor area may be used if the exposed parts are changed. Soda Stream makers may be used with new bottles for Passover (none of the flavorings are kosher for Passover).

## THESE ITEMS MAY NOT BE KASHERED FOR PASSOVER:

- China, pottery, earthenware and synthetic rubber.
- Teflon or similarly coated ware and enameled pots.
- Oven glassware (e.g. Pyrex, Melmac, Corningware and Corelle).
- Toaster and toaster ovens.
- Utensils with wood or plastic handles.
- All plastic items.
- Graters and strainers.
- George Foreman grill, waffle iron or sandwich maker.
- Teflon, Silverstone and Porcelain enamel.
- Electric mixers - Since the motor area of the electric mixer is often exposed to Chametz and can be cleaned only with great difficulty, therefore it is recommended that a special mixer for Passover be used.
- Utensils or vessels that cannot be thoroughly cleaned, such as those having crevices in which Chametz can accumulate (e.g. bottles with narrow necks, sieves, etc.)
- Dishwashers (except stainless tubs with new racks).
- Crock-pot, pasta maker and plastic vegetable steamer.



Catering + Event Services  
For Every Occasion

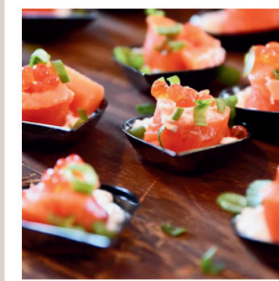
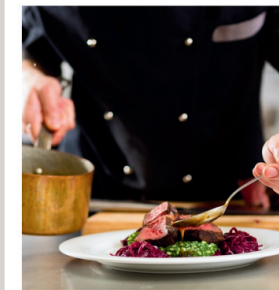
*full service catering*

- Custom Menus
- Bar Services
- Custom Cocktail Design
- Menu & Cocktail Tasting
- Event Rentals
- Linens
- China, Glassware, Silverware
- Wedding Cakes
- Grooms Cakes
- Wedding Florals
- Event Staffing
- Wedding Planners

BOOK NOW 972-400-8356  
7114 CAMPBELL RD, DALLAS TX 75248

*The*  
GREEN ROOM  
EVENTS & LOUNGE  
BAR

MEATPOINT





Simcha Catering

Under supervision



## 2024/5784 PASSOVER TAKEAWAY MENU



### ENTRÉES

HERBED CHICKEN SCHNITZEL  
CHICKEN MARSALA  
BONELESS BREAST OF CHICKEN  
HONEY PECAN CHICKEN  
BONELESS RIB EYE  
SMOKED BEEF BRISKET  
OVEN-ROASTED BEEF BRISKET  
ARTHUR'S SIGNATURE CRANBERRY  
MEATBALLS

### VEGETARIAN ENTREES

HEARTY ROASTED RATATOUILLE  
EGGPLANT SCHNITZEL

### FISH

SALMON & GEFILTE FISH TERRINE  
LEMON SALMON PICCATA  
TERIYAKI SALMON  
SLICED GEFILTE FISH

### SYMBOLIC ITEMS

*Roasted egg, charoset, horseradish root,  
romaine leaves, chicken bone & cooked  
potato on a disposable seder plate*

### SOUP

MATZO BALL CHICKEN SOUP  
HEARTY VEGETABLE  
MUSHROOM ONION

### SIDES

GRILLED VEGETABLE MEDLEY  
CLASSIC POTATO KUGEL  
GARLIC MASHED POTATOES  
OVEN-ROASTED NEW POTATOES  
BROCCOLI KUGEL  
WHIPPED SWEET POTATOES  
SPRING SQUASH MEDLEY

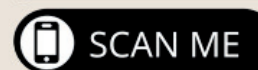
### DESSERT

MOUSSE CUPS

**TO PLACE YOUR PASSOVER ORDER  
VISIT OUR WEBSITE: [WWW.SIMCHAKOSHER.COM](http://WWW.SIMCHAKOSHER.COM)**

**ORDERS MUST BE PLACED BY  
THURSDAY, APRIL 18th AT 2:00 PM  
PICK UP AT CONGREGATION TIFERET ISRAEL  
APRIL 21ST OR APRIL 22ND  
10909 Hillcrest Rd, Dallas, TX 75230**

Contact Kimber Miller  
with any questions or for assistance  
[KimberHM@iCloud.com](mailto:KimberHM@iCloud.com) | 214-957-4143





# BBQ NITE

at the JCC

Come with your family or friends for a Kasher-for-Passover BBQ Dinner!

April 25th  
5:30 - 8 pm



## PRICING

### ADULTS

Single Meal price ages 13 and Up  
\*Includes seconds on meat

\$47.65

### CHILDREN

Ages 5-12  
No charge ages 4 and under

\$32.00

### VEGETARIANS

\$32.00

Looking for some Passover fun with friends and family? Join us at JCC Dallas on April 25th from 5:30-8:00 PM for our annual KOSHER-FOR-PASSOVER FAMILY BBQ HOEDOWN!

Featuring a full Texas BBQ with all the fixins, chicken fingers, a farm-to-table salad bar, a variety of veggie options, and dessert!

Food is provided by Simcha Catering and supervised by the VAAD Hakashrus of Dallas. Reservations are encouraged by April 19th at 4 PM.

Purchase now: <https://form.jotform.com/240869150111146>



Contact Kimber Miller with any questions at [KimberHMeiCloud.com](http://KimberHMeiCloud.com) or 214-957-4143



# DK CONSUMER GUIDE TO PASSOVER

## *FOODS & PRODUCTS*

- Shopping for the week of Passover is a special undertaking that involves scrupulous care to avoid any foods that may contain Chametz.
- One must ascertain that any processed food has been properly supervised and certified by an acceptable kosher supervisory agency or rabbinic authority.
- Look for the "P" designation after the kosher symbol. The "P" indicates that the product is Kosher for Passover, not pareve. As always, look carefully before making your purchase! Kosher for Passover store stickers found on products should not be assumed to be an accurate indication of Kosher for Passover certification due to possible mislabeling at the store level. Many times, the store, by accident or unknowingly, may place other products on the Passover shelves, and non-Passover products may be mixed with the Passover items. Also, note that there are more "kitniyot" products than ever, so please check the label carefully.

## *PASSOVER CERTIFIED PRODUCTS*

**These Products require special passover certification  
As they may contain Chametz**

Antacids and vitamins including Tums (kitniyot)  
Honey  
Apple juice and apple sauce  
Baking powder  
All brown sugar  
Canned fruits and/or vegetables  
Cheese, cottage cheese, sour cream  
Chewing gum and all candies  
Chocolate chips, bars and candies  
Citric acid  
Decaf coffee and all instant tea  
All bagged lettuce and vegetables  
Confectioner's sugar  
Creamer (non-dairy) and sugar substitutes  
Dextrose  
Dried fruit raisins, dates and prunes  
Ensure with fiber  
Jam and jelly, honey and syrups  
Lactaid (if needed, must be added prior to Passover)  
Fruit Juices

Lemon, grapefruit or other fruit juices  
Milk and yogurt condensed and regular  
Margarine, butter and shortening  
Mayonnaise and ketchup  
Oil, cooking oil spray and vinegar  
Orange and lemon peels are sprayed with color and should not be ground into food  
Paper plates  
Pet food Please call the Vaad/DK Office for the latest information  
Pickles, olives, peppers and sour tomatoes  
Prepared ground horseradish  
Pre-peeled fruits and vegetables  
Soda, flavored seltzer, grape juice, wine and liquor  
Spices  
Tomato-based products  
Tuna (canned) and salmon (canned)  
Frozen vegetables (companies may produce them on equipment that also produces pasta)



# KOSHER FOR PASSOVER PRODUCTS

**\*Without Special Passover Certification.**

**\*Unless otherwise noted, all products must be new and in sealed packages!**

## ***FRUITS, VEGETABLES AND JUICES***

Frozen orange or grapefruit juice 100% pure with no sweeteners, additives or preservatives

Frozen unsweetened additive free whole, sliced or formed frozen fruit (peaches, melon, blueberries, strawberries, etc.) without syrup.

Real Brand Lemon or Lime Juice

Raisins without oil added: Dole, Great Value, and Trader Joe's

Raisins Sunsweet Triangle K-P

Prunes Sunsweet Triangle K-P

Safeway Baby peeled carrots

365 Everyday Value peeled carrots

## ***BEVERAGES***

Unflavored Seltzer

Tea bags: Lipton regular

\*New this year, Lipton decaf is no longer KFP

Instant tea must be Kosher for Passover

Cocoa: 100% pure, no additives

Coffee: all whole or ground, unflavored, commercially packaged, not including decaf

Instant coffee: Folgers: Classic roast, regular, including decaf, Taster's Choice Regular (not decaf) and VIA.

Decaffeinated coffee requires a kosher for Passover certification. Some, including Sanka, Maxwell House, and Yuban, are acceptable when labeled kosher for Passover.

K-cups: single-serve instant regular coffee: not including decaf: Folger's, Green Mountain Coffee, LaVazza, and Starbucks.

\*A new Keurig machine is preferred. Call our office for instructions on how to kasher an existing one.

## ***SPICES***

All ground spices need a kosher for Passover certification.


Salt any brand without Iodine, Polysorbate, Maltodextrin and Dextrose.

## ***SWEETENERS***

White pure granulated cane sugar, preferred to have a P, without additives.

Powdered sugar must have a hechsher KFP.

Brown sugar needs a KFP.

Domino and C&H brands, brown sugar needs a .

Sugar substitute Sweet & Low that bears an OU-P. Do NOT use Splenda, Equal, Stevia or regular Sweet & Low, unless bearing an OU-P.

## ***MISC***

All Extra and Virgin Olive Oil is acceptable without a KFP but it is preferable to have at least a reliable year round hechsher.

Spectrum natural virgin coconut oil.

Avocado oil, Chosen brand.

Spice world fresh and peeled garlic.

Baking soda any pure bicarbonate of soda.

Kirkland brand Almond Flour

All raw nuts including whole, chopped or ground (not flour) are acceptable with no additives like BHA and BHT. Midget

Pecans & Pecan pieces require Passover certification. (Exceptions: Peanuts are not true nuts so they are not acceptable)

**All commercially packaged raw and unseasoned meat, poultry and fish (fresh & frozen) with an acceptable hechsher are kosher year round including Passover. (This does not apply to ground meat which needs to be certified kosher for Passover.) Tom Thumb packaged beef, lamb, and chicken will be KFP available on Wednesday, April 10, 2024 at the North location, and South location on Sunday, April 14, 2024. K Market also has available kosher products.**

# KOSHER FOR (continued) PASSOVER PRODUCTS

## *INFANT CARE AND CONSUMABLES*

The following foods contain legumes (not eaten by Ashkenazic Jews) but are acceptable for infants. Children should be served separately with utensils reserved for this purpose that are not washed in the kitchen sink.

Gerber carrots and squash without a P, when bearing an OU (not legumes), green beans and peas (kitniyot) \*acceptable for Passover l'chatchila even for adults when sold in glass jars ONLY.

All Liquids and powders of Similac, Enfamil, Prosobee and Isomil

Johnson's baby shampoo and powder

Baby Magic bath, oil, powder, shampoo and lotion

Baby wipes any brand alcohol-free

Any mineral oil

Diaper Cream A&D, Desitin & Diaperene

## *GENERAL HOUSEHOLD*

Paper plates must have a hechsher: Dixie Brand (OU) and Chinet brand (OK-P) and Solo Brand (OU) Members Mark, Great Value and Kirkland

Plastic coated plates acceptable for cold use only.

All plastic flatware.

All Styrofoam plates or cups.

All aluminum foil wrap and pans.

All paper towels.

All plastic bags and wraps All wax paper and plastic wrap.

Charcoal.

All isopropyl or synthetic alcohol.

Rubber Gloves without powder coating; Rubbermaid is acceptable.

Plastic tablecloths.

## *HOUSEHOLD CLEANERS*

Detergents: any powdered brand which is certified kosher all year.

Liquid Dish Detergents: Ajax, Dawn, Ivory, Joy and Palmolive.

Other Cleaners Ajax, Any Oven Cleaner, Fantastik, Mr. Clean, Spray & Wash, Comet, Bon Ami, Clorox, Windex and Murphy's Silver Polish Hagerty, Goddards and Rokeach, Wrights.

## *PERSONAL CARE*

It is preferable to only use Toothpaste and Mouthwash with a KFP hechsher, however these items are still acceptable:

\*New this year- K Market has KFP items.

Toothpaste all varieties of Colgate.

Mouthwash Listerine- Cool Mint, Aim, All, Total Care, Zero, Scope - All.

Dental Floss any unflavored including wax.

Lip Balm Chapstick brand, unflavored.

Lipstick containing Chametz should not be used (best to purchase new).

Pepto-Bismol (original).

Tums is kitniyot.

Alka-Seltzer - original tablets (Effervescent and Extra Strength are not recommended).

All varieties of body soaps, shampoos and stick deodorants permitted for use on Passover.

Deodorant Spray: Arrid, Right Guard, and Secret.

Other colognes, perfumes, hair spray, shaving lotions and deodorants in liquid form should not be used.

All types of ointments, creams, nail polish, hand lotions, eye shadow, eyeliner, mascara, blush, foot and face powders and ink and paint may be used regardless of its ingredients.

**\*Without Special Passover Certification. \*Unless otherwise noted, all products must be new and in sealed packages!**

# CERTIFIED FOR PASSOVER

## LOCAL PRODUCTS AND SERVICES

### JCC KITCHEN

7900 Northaven Rd. / 214.239.7100 / JCCDallas.org

Once again certified kosher for Passover, all senior meals, and JFS Kosher home delivered meals will be kosher for the week of Passover

### KOSHER PALATE

7989 Belt Line Road, Suite 154 / 469.601.1002 / www.palatecateringtx.com

Order your Passover menu online.

### MILK & HONEY JERUSALEM MARKET & GRILL

420 N. Coit St., #2023 / 972.404.0704 / milkandhoneydallas.com

Owners, Gadi and Amy Cohen, are well stocked with many new and familiar Passover products. They will feature for Passover: Israeli products, dairy products, Cholov Yisroel cheese, packaged goods, (spices, candy, etc.). Closed for Passover.

### SIMCHA KOSHER CATERING

972.620.7293 / simchakosher.com

Enjoy the Kosher for Passover Family BBQ Hoedown on April 25th from 5:30-8:00 pm at the "J" Aaron Family JCC, 7900 Northaven Rd. Simcha will be serving food Kosher for Passover from Tifferet Israel Kitchen and will have a takeaway menu for Passover. Additionally, they will be catering Passover seders at Tiferet. See the ad for more details.

### TEXAS HILLEL IN AUSTIN

Visit [TexasHillel.org](http://TexasHillel.org) for more information.

Texas Hillel will be hosting a student Seder. Contact for details: [info@texashillel.org](mailto:info@texashillel.org)

Rabbi Moshe Trepp, the Dallas Kosher representative in Austin overseeing DK kashrus, can be reached at [theenglishrabbi@gmail.com](mailto:theenglishrabbi@gmail.com) / 512.293.5252.

Gail's Catering will offer only pre-packaged meals to-go and community meals on Passover eve. To order pre-packaged meals from Gail's Catering, simply scan the QR code.



### K-MARKET

6911 Frankford Rd, Dallas, TX 75252 / 469.577.4044

Full line of KFP grocery fresh meat, chicken, and fish. They will also have fresh fruit and vegetable platters. They will be open during Chol Hamoed. Also they will have full service take out (\*details included in their ad on the last page).

### TOM THUMB

11920 Preston Rd. / 972.392.2501 and 1380 West Campbell Rd. / 972.680.6010

The two Tom Thumb Kosher Markets can be found either in Dallas (Preston address) or in Richardson (West Campbell address). If you have any Passover questions please call our DK Mashgichem.

Each location will be kosher certified for Passover in the deli and fresh meat market beginning April 10th at the North location and April 14th at the South location. Only at that time will all the cut meats, deli meats, roasted chicken and all sided dishes be kosher for Passover. All commercially packaged raw and unseasoned meat, poultry and fish (fresh and frozen) with an acceptable hechsher are kosher year round including Passover. Tom Thumb is preparing oven fried and rotisserie chickens KFP along with several other cooked foods for your convenience. **Please note that from April 7th at the North location and April 11th South location, until after Passover, there will be no sushi, sandwiches or fried chicken.**

Tom Thumb offers several displays and aisles of Passover packaged products plus a full display of dairy products including Cholov Yisroel KFP milk and a large selection of frozen foods. Both stores offer a large variety of kosher wines and grape juice for Passover.

### WHOLE FOODS

Preston & forest - 11700 Preston Rs Suite 714 Dallas TX 75230 (214-361-8887)

This location will offer Kosher for Passover (KFP) fresh pre-cut fruits and vegetables. Additionally, the fish counter will have fresh fish and ground fish available exclusively on Tuesday, April 18th. Please note that pre-ordering ground fish in advance is required (see ad for details).

# 2024 ALERTS

## LIQUOR

All liquors and liqueurs require kosher for Passover certification, including Manischewitz.

## WINE

Examine wines carefully! Some of them, while kosher, might NOT be kosher for Passover because of added corn syrup or sweeteners. To fulfill the mitzvah of 4 cups of wine make sure the product is truly grape wine (Hagafen) and not berry wine (Shehakol).

### **\*New Wine alert for 2024\***

Shemita wine is being sold locally. Many of these wines typically bear an OU or other recommended kosher symbol, however, if they were produced in Israel during Shemita (year 2022), these bottles will lack the recommended certification. They may also have Hebrew markings to specify their Shemita status. Please avoid purchasing these wines as it is not recommended.

## SEFARDIC JEWS

For the Sephardic Jews whose custom it is to use rice on Passover, it must be checked prior to Passover to be additive free (Mahatma, Riviana, Success). Note: Carolina brand rice is not recommended.

## THE JEWISH LAW

All Jewish grocers, bakers and other food merchants, who deal with Chametz, must sell their Chametz before Passover. If they fail to do so, these Chametz products are forbidden even after Passover. In such an event, purchases of Chametz goods should not be made for the period of time it normally takes to replenish such stock. It is therefore preferable to deal with a proprietor who is known to have sold his Chametz before Passover, and who sells no Chametz during Passover. All Dallas Kosher certified Jewish owned food merchants sell their Chametz including Centennial and Glazers.

## BAKERY PRODUCTS

Macaroons, cakes and the like, which do not bear special Passover certification are not acceptable. This is true for all Dallas Kosher supervised bakeries. Although Dallas Kosher supervises many bakeries in and around the state, NO Dallas Kosher bakery is approved for Passover.

## QUINOA

Quinoa is kosher for Passover and is not related to the five types of chametz grains, millet or rice. However, because there is a possibility that quinoa grows in proximity to chametz grains and may be processed in facilities that compromise its Kosher for Passover status, quinoa should only be accepted with a reliable Kosher for Passover supervision. NEW FOR THIS YEAR: all brands of quinoa need to be certified for Passover.



Celebrate  
**PASSOVER**  
with Tiferet Israel  
and Simcha Catering

Join us for two nights of Seders  
led by Rabbi Meir Sabo

April 22	April 23
8:45 PM	9:00 PM

Shabbat Dinner, 7:30 PM April 26

Reservations required  
Private tables available  
Sponsorships available  
Visit [tiferetisrael.org](http://tiferetisrael.org)

Kosher for Passover takeouts  
available at [simchakosher.com](http://simchakosher.com)  
(order by April 18).

Supervised by  
**D** DALLAS  
KOSHER

# RABBI DAVID S. SHAWEL

Every year at the Pesach Seder, we ask: "This Matzah: What is the reason for it?" We reply that the dough our ancestors took with them did not have time to rise before Hashem revealed Himself and redeemed them. As the Torah relates:

**"They baked the dough that they brought out of Egypt as unleavened matzah, since it had not risen, for they were driven out of Egypt and could not delay" (Shemos 12:39)."**

But is this the real reason that our ancestors ate matzah? On the first day of the month of Nissan, actually two weeks prior to their hurried escape from out of Egypt they had already been commanded: "On the evening [of Passover], you shall eat matzah" (Shemos 12:18). So why did our ancestors eat matzah? Was it because they needed to leave Egypt in a hurry? Or because Hashem commanded them to eat matzah? The answer is there are two aspects of Matzos. Our Rabbis distinguished between two distinct categories of eating matzah. On the first night of Passover, Seder night, it is obligatory to eat matzah. During the rest of the holiday, however, eating matzah is optional. According to many authorities, even though we are not obligated to eat matzah on these days, by doing so we fulfill a mitzvah. So now let us return to our original question. There are two different aspects to the mitzvah of eating matzah. One is a divine commandment, and the other is a commemorative act. At the Pesach Seder we eat matzah because Hashem commanded us, as the Torah states, "In the evening (of Pesach) you shall eat matzah." By eating matzah at the Seder, we are fulfilling our obligation in observing the divine commandment from Hashem. It is an expression of our reverence of Hashem and willingness to accept His charge. When we eat matzah during the other days of Pesach it's our expression to commemorate our hastened exodus from out of Egypt. We think how Hashem revealed Himself to redeem us from out of the House of Bondage. Although voluntary, we embrace this eating of matzah because it is our expression of our love of Hashem. We appreciate His great kindness to our ancestors and to us. Which service of Hashem is greater? Serving Him out of love or reverence? Maimonides' commentary on Shemos 20: 8 concludes that serving Hashem out of love is a higher level. For this reason, when we fulfill a positive commandment, it is an expression of our love of Hashem. When we refrain from performing a negative commandment it is an expression of reverence and awe of Him. As we celebrate Pesach Holiday with family and friends this year, let us be grateful for all the bountiful blessings Hashem has given us. May our observances of all the many commandments during Pesach be fulfilled through love. The DK staff, board of directors and our families join me in wishing you and yours a Chag Kasher V'Somayach!

*Rabbi David S. Shawel*

# LETTER FROM THE PRESIDENT

Dallas Kosher has had a remarkable year, marked by tremendous success and growth. As we look ahead to Passover, we are eager to continue serving our community with dedication and the highest level of expertise. To better meet the evolving needs of our membership and growing community, we have begun a process of restructuring our organization to ensure a vibrant future for Dallas and DK.

As our organization undergoes exciting changes to better serve our current members and as we welcome new families to our community, we remain confident we will continue and fulfill our mission to promote the observance of kashrus by making venues and products readily available and convenient to all areas of the Dallas Metroplex.

As we bid farewell to our beloved Executive Director, Meira Naor, who has retired to spend more time with her family in Dallas and Israel, DK has begun a search for new leadership. We are grateful for her hard work and commitment to our Jewish community over the past seven years and we wish to extend our appreciation and well wishes to the Naor family in their future endeavors.

Additionally, Rabbi Sholey Klein, our dedicated and respected Kashrus Administrator for the past 29 years, will be relocating to Florida with his wife Chana by the end of the school year. Rabbi and Mrs. Klein have served the Dallas Jewish community in many ways and we greatly appreciate their efforts. During his tenure, Rabbi Klein elevated kashrut standards and devoted years of service to Dallas Kosher, earning a well-deserved reputation in the kashrut industry. Though we will miss him, we wish him continued success in his new position with a kashrus organization in South Florida.

These changes mark an exciting new chapter for Dallas Kosher, and we look forward to continuing to serve our members and community. Our Vaad takes center stage in ensuring a smooth and meaningful holiday for the entire community. As a trusted authority on kashrus, Dallas Kosher plays a vital role in maintaining the highest standards of kosher observance, especially during this significant holiday. We are here to assist you with all your Passover needs. In this newsletter you will find the DK Consumer Guide to Passover, local products and services, information on the DK Pesach wine sale, DK community kashering days for members and additional information to help you with all your needs during the eight days of Passover. Feel free to call, text or What's App Rabbi Klein or Rabbi Shawel if you have any kashrus questions or need assistance with kashering your kitchen before Passover. Thank you both for making our Pesach kosher.

The wide reach of DK's impact extends beyond our members by promoting understanding and inclusivity throughout the community. We invite you to join our DK membership of 700+ families from all area congregations and neighborhoods. While its members have varying levels of observance, the DK sets a community standard of kashrus that is inclusive of everyone and meets the highest Torah standard of which we can all take pride. Your support will influence our community positively toward the observance of kashrus and your dues will underwrite many of our programs and services to the community.

As Passover approaches, Dallas Kosher's tireless efforts help ensure that the entire community can come together through shared values and traditions. Special thanks to David Goldman for getting this newsletter together and for keeping the DK office running smoothly. Thank you as well to Sheryl Wernick for making sure our accounting, budgeting and payroll are all in order. And finally, thank you to our diligent Mashgichem who work tirelessly to make sure every DK venue is supervised properly. On behalf of the DK Board and Staff, I wish you all a meaningful and kosher Pesach, filled with family, friends and community. Chag Kasher Sameach.

*Jeri Finkelstein*

**DK BOARD PRESIDENT**

# PREPARING THE SEDER PLATE

## ASSEMBLY & SIGNIFICANCE

The Plate can be as fancy as a purchased specialty Seder plate or as simple as a Styrofoam plate on which your children have drawn the Passover symbols. Allowing children to help you prepare the Seder plate is a fun and effective way to teach them about the symbolism of the food and their connection to the Passover story.

**Prepare the Seder plate long before the Seder meal so you are not pressured to get it ready at the last minute.**

### BUY THE FOLLOWING KOSHER FOR PASSOVER FOODS:

apples	cinnamon	romaine lettuce
nuts	sugar	horseradish root or prepared
red wine	shankbone or poultry neck	horseradish
egg	potato	

## CONTENTS OF THE SEDER PLATE

The prepared plate should be placed before the head of the household or the one conducting the Seder.

### CHAROSET

A mixture of apples, nuts, wine and spices / symbolizes the mortar the Jewish slaves made in their building for the Egyptians.

### ZEROA

A roasted shankbone or neck of poultry / reminds us of the "mighty arm of G-d." It is also symbolic of the Paschal lamb offered as the Passover sacrifice in Temple days. Roast the shankbone in the oven for about 30 minutes.

### BAYTZAH

A hard-boiled egg / symbolizes the festival sacrifice brought in the days of the Temple. Some interpret this as a symbol of mourning for the Temples as the sacrifices were no longer offered after the Temples were destroyed.

### KARPAS

Generally parsley or a potato and dipped in salt water / represents tears. The custom of serving karpas dates back to the 1st and 2nd centuries when a formal meal began by passing around vegetables.

### CHAZERET

A bitter vegetable (romaine lettuce is generally used).

### 3 MATZOT

Stack 3 matzot, separated from each other by either a plate, napkin or handkerchief, one on top of the other and cover the top matzah as well. For convenience sake, you can purchase a specially made cloth matzah holder, "tash", which contains three pockets, one for each matzah. These are available at any of the Judaica stores and make for a nice Passover gift.



**WHOLE FOODS MARKET**

**FRESHLY GROUND FISH AVAILABLE BY PRE-ORDER ONLY!**

ORDER DEADLINE IS 6:00PM MONDAY, APRIL 15TH

PICKUP ON THURSDAY, APRIL 18TH

ORDER TODAY AND SECURE YOUR PASSOVER DELIGHT! SCAN THE QR CODE TO PLACE YOUR ORDER.

EXCLUSIVE TO PRESTON/FORREST LOCATION.

RESERVE YOUR FRESHLY GROUND FISH AND ELEVATE YOUR PASOVER FEAST!

LIMITED AVAILABILITY!

[www.dallaskosher.org/wholefoods](http://www.dallaskosher.org/wholefoods)



# CHAMETZ

During the eight days of Passover, a Jew is forbidden to eat, use or possess (own) Chametz. This Biblical prohibition extends to non-food items (example: Play-Doh may be Chametz and cosmetics frequently contain Chametz).

## WHAT CONSTITUTES CHAMETZ

Chametz designates all leavened foods, drinks and ingredients, which are made from, or contain, a mixture of wheat, rye, barley, oats or spelt. Therefore, all grain products or mixtures of grain, such as breads, cereals, breakfast foods, grain alcohol, grain vinegar, yeast and malts are forbidden for the duration of the festival. Legumes (beans, corn, peas, rice, alfalfa sprouts, bean sprouts, green beans, etc.) mustard and the derivatives of these foods, due to a similarity to Chametz, are likewise not eaten by Ashkenazic Jews due to Rabbinic decree. A Jew is forbidden to own Chametz during Passover. If one has not disposed of all forms of Chametz, he is obligated to negotiate the sale of the Chametz.

## THE RABBI AS YOUR AGENT

One who cannot dispose of his/her Chametz before Passover (example: pasta, crackers, etc. in one's pantry, liquors in one's bar, etc.) must authorize his/her Rabbi, in advance, to sell all remaining Chametz to a non-Jew.

*\*Contrary to a popular misconception, Rabbis do not buy the Chametz!*

*The individual participating in the sale appoints his Rabbi as an agent to sell his Chametz to a non-Jew on the Eve of Passover. The signature on the contract and the exchange of an object (e.g. a napkin) in a procedure known as a kinyan chalifin, formalizes the power of attorney. This transaction takes place on the Eve of Passover and an actual transaction of money takes place.*

## IMPORTANT TIMES AND INFORMATION

### Thursday, April 18th - 5:00pm

This transaction, which is 100% legal and binding in both Jewish and civil laws, must be received in the Dallas Kosher office no later than 5:00pm Monday April 3rd.

### Monday, April 22nd - 10:47am

The latest time we may eat Chametz.

### Monday, April 22nd - 12:06pm

The final Kol Chameira prayer (annulling ownership of Chametz) is said.

### Wednesday, April 30th - 10:00pm

This year Chametz is sold by Rabbi Shawel will be bought back by Rabbi Shawel on Wednesday night, April 30th by 10:00pm, at which time you can eat your sold Chametz. You can purchase new Chametz immediately following the conclusion of Passover after 8:52pm.

## COMMUNAL KASHERING FOR DK MEMBERS

(\*IF NOT A DK MEMBER, SEE PAGE 16 TO BECOME A MEMBER)

### OF POTS AND PANS FOR PASSOVER.

*All items must be thoroughly cleaned prior to arrival. See list inside of items that may be kashered for Passover or contact our office. Please do not bring items that cannot be kashered or are not clean.*

**SUNDAY, APRIL 14TH 10:30AM-12:30PM**

**LOADING DOCK OF OHR HATORAH  
6324 CHURCHILL WAY**

**SUNDAY, APRIL 14TH 11:00AM-1:00PM**

**CHABAD OF DALLAS  
6710 LEVELLAND ROAD**



# SALE OF CHAMETZ

## MUST BE RECEIVED BY 5:00PM ON THURSDAY, APRIL 18TH.

During the eight days of Passover, a Jew is forbidden to eat, use or possess (own) Chametz. This Torah prohibition extends to non-food items (example: Play Dough may be Chametz and cosmetics frequently contain Chametz). One who cannot dispose of his/her Chametz before Passover (example: pasta, crackers, etc. in one's pantry, liquors in one's bar, etc.) must authorize his/her Rabbi, in advance, to sell all remaining Chametz to a non-Jew. This transaction (100% legal and binding in both civil and religious laws) must be received in the DK office no later than 5:00PM on Thursday, April 18th. One must wait one hour after the holiday ends, until 10:00 pm Wednesday, April 30th, before using the Chametz sold, as the re-purchase will take an hour to consummate.

### AUTHORIZATION FOR SALE OF CHAMETZ

I empower Rabbi David Shawel to sell all Chametz possessed by me as defined by the Torah and Rabbinic Sages, and lease all places where Chametz may be found. I understand the authority given for these transactions conforms to Jewish and civil laws.

\*This year, DK is only accepting sale of Chametz online. Please scan the QR code or visit: [www.dallaskosher.org/chametz](http://www.dallaskosher.org/chametz)



---

## DALLAS KOSHER ORGANIZATION

### BOARD OF DIRECTORS

Jeri Finkelstein  
Joe Abrams  
Andi Bonner  
Susan Cedars  
Marcy Fried  
Yehudah Istrin  
AJ Magid  
Dani Meyerovitz  
Marcos Rosenberg

### STAFF

Rabbi Sholey Klein  
*Kashrus Administrator*  
Rabbi David Shawel  
*Executive Director*  
David Goldman  
*Office Manager*

### PAST PRESIDENTS

Manual Hoppenstein ר"ב  
Harold Rubin ר"ב  
Bernie Gerson ר"ב  
Bill Finkelstein  
Jeffrey Schiller  
Darryl Meyerovitz  
Stuart Wernick  
Elliot Gershenson

### PAST PRESIDENTS

Ari Reubin  
Leonard Epstein  
Morti Tenenhaus  
Gideon Posner  
Frank Berger  
Arthur Altman  
David Radunsky

## MEMBERSHIP INFORMATION

### JOIN TODAY AND SUPPORT DALLAS KOSHER

Your membership will insure our continued success. As Passover approaches, we take notice of the importance of Jewish values and all Mitzvot and the vital work of the Vaad Hakashrus of Dallas in perpetuating Jewish life in Dallas. We urge you to renew your membership or ask others to join as a positive expression of support. A special thank you to all our current DK members. All contributions are tax-deductible, including memberships.

DOUBLE CHAI \$3,600  
PATRON CHAI \$1,800  
UNDERWRITER \$1,000  
PATRON \$500-\$999

BENEFACTOR \$250-\$499  
SUPPORTER \$180-\$249  
CONTRIBUTOR \$100-\$179  
MEMBER \$36-\$99

DK DONATION QR CODE OR VISIT:  
[www.dallaskosher.org/donate](http://www.dallaskosher.org/donate)





**MARKET**  
GROCERY & DELI

Your One stop Passover Shop

# Wishing you a Happy & Kosher Passover



CLICK HERE FOR  
PASSOVER MENU

📞 469-615-1966

📍 6911 Frankford Rd #600  
Dallas TX 7525



7800 Northaven Rd.  
Dallas, TX 75230

*Happy  
Passover*

